

The LINES of Our Lives

Line up to learn about the different kinds of lines you see every day!

Let's look at lines! You read about **parallel, intersecting, and perpendicular lines** in school. But you also can see them everywhere! Check out our "Line Lineup" and questions to see what we mean. You'll know lines in no time!

LINE LINEUP

Parallel lines are lines that stay the same distance apart at all points. They never *intersect* (cross). The top and bottom of your notebook are parallel lines!



Intersecting lines cross each other at one point, like the top corner of this hanger.



Perpendicular lines intersect each other at a right angle, like the corner of this page, or the hands of a clock at 3:00.



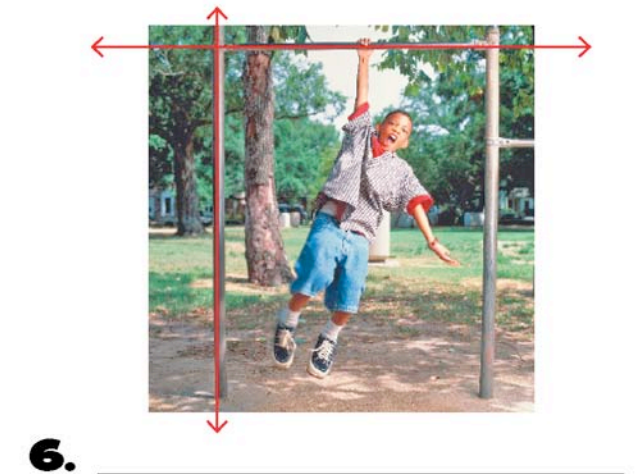
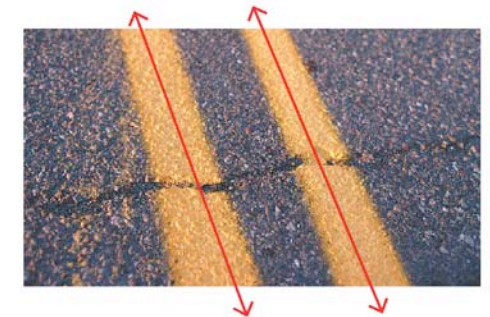
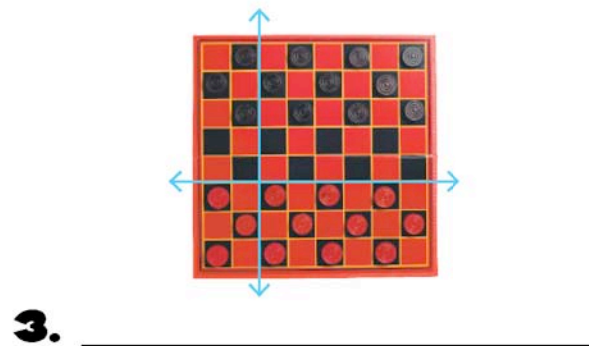
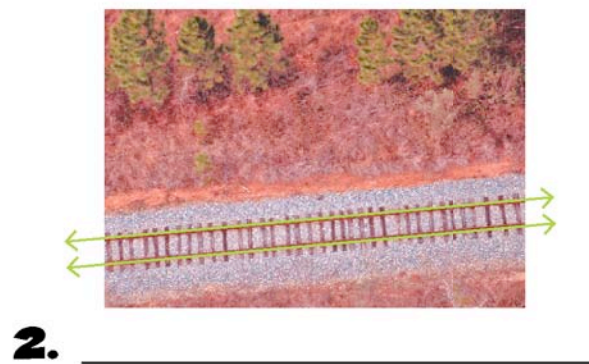
Example: Are these lines parallel, intersecting, or perpendicular?



These lines are the same distance apart at all points. They go from one side of the paper to the other without crossing. They are parallel lines.

What to Do

In each picture below, decide whether the lines we've marked are parallel, intersecting, or perpendicular. Write the correct word in the blank below each picture.



Don't Stop Now: Do any of the photos have more than one type of line pair in them? Which other types of lines do you see?

—By Sarah Klein

PHOTO: (NOTEBOOK, CLOCK, HANGER, CHECKERBOARD); GRANT FAINT/PHOTO/SC/GETTY (FERRIS WHEEL); KENT KNUDSEN/PHOTO/SHUTTER/GETTY (YELLOW LINE); ALEX MACLEAN/PHOTO/SHUTTER/GETTY (TRACKS); PAM FRANCIS/STONE/GETTY (MONKEY BARS).